

Energy Solutions

Representative “Before & After” Cleaning & Coating Pictures

Various Surface Types

Energy Solutions

MONUMENTS & BRASS

Energy Solutions | P.O. Box 73493 | Richmond, VA 23235 | (804) 379-9067
www.EnergySolutionsVA.com | e-mail: mail@EnergySolutionsVA.com

Copyright © 2008, Energy Solutions

Energy Solutions

Monument & Brass

(Entire structure cleaned & coated—brick, aggregate & brass)

BEFORE



AFTER



Energy Solutions

Monument & Brass

(Entire structure cleaned & coated—brick, aggregate & brass)

BEFORE



AFTER



Energy Solutions | P.O. Box 73493 | Richmond, VA 23235 | (804) 379-9067
www.EnergySolutionsVA.com | e-mail: mail@EnergySolutionsVA.com

Copyright © 2008, Energy Solutions

Energy Solutions

Cleaned & Coated Brass Hand Rail

(Prior to coating, this brass hand railing required *daily cleaning & polishing*; today, 6 years later, it looks as it did the day it was originally coated, yet requires NO cleaning or polishing!)



Energy Solutions

Various Hard-surface Floor *Cleaning & Coating* Engagements

Representative “Before” & “After” Pictures

Energy Solutions

A Clean and Coated Flooring System increases slip resistance by an average of 67%

TCA  **PRODUCT TESTING SERVICE**
 Tile Council of America, Inc. 100 Clemson Research Blvd., Anderson, SC 29625 Tel: (854) 845-TILE Fax: (854) 546-2821

TCA TEST REPORT NUMBER: TCA-200-01 PAGE: 1 OF 4

TEST REQUESTED BY: Adsil
 Attn: Jim Gibson
 1 Hargrove Grade
 Suite 1K
 Palm Coast, FL 32137

TEST SUBJECT MATERIAL: uncoated specimen

TEST DATE: 10/29/01-10/30/01

TEST PROCEDURE: ASTM C1028 - "Standard Test Method for Determining the Static Coefficient of Friction of Ceramic, Tile and Other Like Surfaces by the Horizontal Dynamometer Pull-Meter Method."
 -A Chatillon DFIS 100 digital force gauge was used to measure each pull in pounds-force.
 -A 3 x 3 x 1/8 inch piece of Neolite was used as the sensor.


TEST RESULTS: The average static coefficient of friction of twelve (12) pulls was:

	As Received	After Cleaning
Dry:	0.67	0.74
Wet:	0.55	0.55

SUBMITTED BY: 
 Noah Chitty
 Laboratory Manager

This report is confidential and has been prepared for the exclusive use of the client. It is not an endorsement, approval, certification, or opinion of any product by TCA. This report shall not be published in any form.

An independent study by the TCA (Tile Council of America) confirms that tile coated with Adsil's floor coatings ***increased slip resistance up to 67%! Significant improvements were documented for both WET & DRY Flooring!!***

TCA  **PRODUCT TESTING SERVICE**
 Tile Council of America, Inc. 100 Clemson Research Blvd., Anderson, SC 29625 Tel: (854) 845-TILE Fax: (854) 546-2821

TCA TEST REPORT NUMBER: TCA-200-01 PAGE: 3 OF 4

TEST REQUESTED BY: Adsil
 Attn: Jim Gibson
 1 Hargrove Grade
 Suite 1K
 Palm Coast, FL 32137



TEST SUBJECT MATERIAL: Microguard™ AD701, AD702 & AD704

TEST DATE: 10/29/01-10/30/01

TEST PROCEDURE: ASTM C1028 - "Standard Test Method for Determining the Static Coefficient of Friction of Ceramic, Tile and Other Like Surfaces by the Horizontal Dynamometer Pull-Meter Method."
 -A Chatillon DFIS 100 digital force gauge was used to measure each pull in pounds-force.
 -A 3 x 3 x 1/8 inch piece of Neolite was used as the sensor.

TEST RESULTS: The average static coefficient of friction of twelve (12) pulls was:

	As Received	After Cleaning
Dry:	0.84	0.81
Wet:	0.83	0.92

SUBMITTED BY:  
 Noah Chitty Date
 Laboratory Manager

This report is confidential and has been prepared for the exclusive use of the client. It is not an endorsement, approval, certification, or opinion of any product by TCA. This report shall not be published in any form without the prior written consent of TCA.

Information provided by the Tile Council of America (TCA) Product Testing Service

**MicroGuard™ AD703 & AD708
 Stain and Slip Resistant Floor Treatment**

The average static coefficient of friction of 12 pulls using the Dynamometer Pull-Meter Method was as follows:

	Uncoated	Coated	Improvement
DRY			
as received	67	84	25%
after cleaning	74	81	9%
Wet			
as received	55	83	51%
after cleaning	55	92	67%

Energy Solutions

Ceramic Tile “Before” & “After”

(Coated ceramic tile requires ONLY damp mopping with clean, clear water;
maintenance labor, equipment, supplies & associated costs reduced 75%)

Before



After

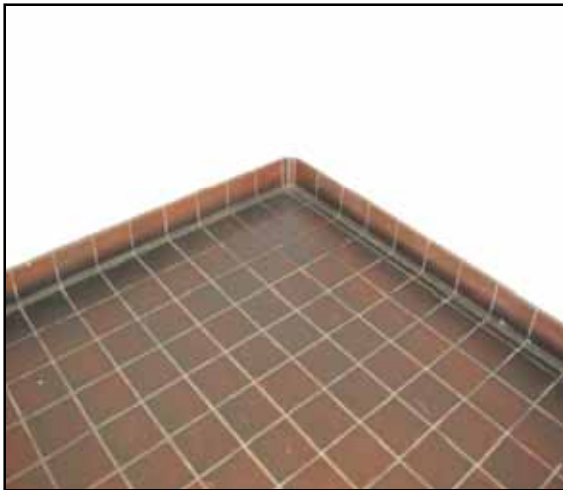


Energy Solutions

Quarry Tile “Before” & “After”

(Coated quarry tile requires ONLY damp mopping with clean, clear water;
maintenance labor, equipment, supplies & associated costs reduced 75%)

BEFORE



DURING



AFTER



Energy Solutions

Quarry Tile “Before” & “After”

(Coated quarry tile requires ONLY damp mopping with clean, clear water;
maintenance labor, equipment, supplies & associated costs reduced 75%)



Before



After

Energy Solutions

Ceramic Tile “Before” & “After”

(Coated ceramic tile requires ONLY damp mopping with clean, clear water;
maintenance labor, equipment, supplies & associated costs reduced 75%)

Before



After



Energy Solutions

Slate Floor “Before” & “After”

(Coated slate requires ONLY damp mopping with clean, clear water;
maintenance labor, equipment, supplies & associated costs reduced 75%)

Before



After



Energy Solutions

Cleaned & Coated VCT Flooring

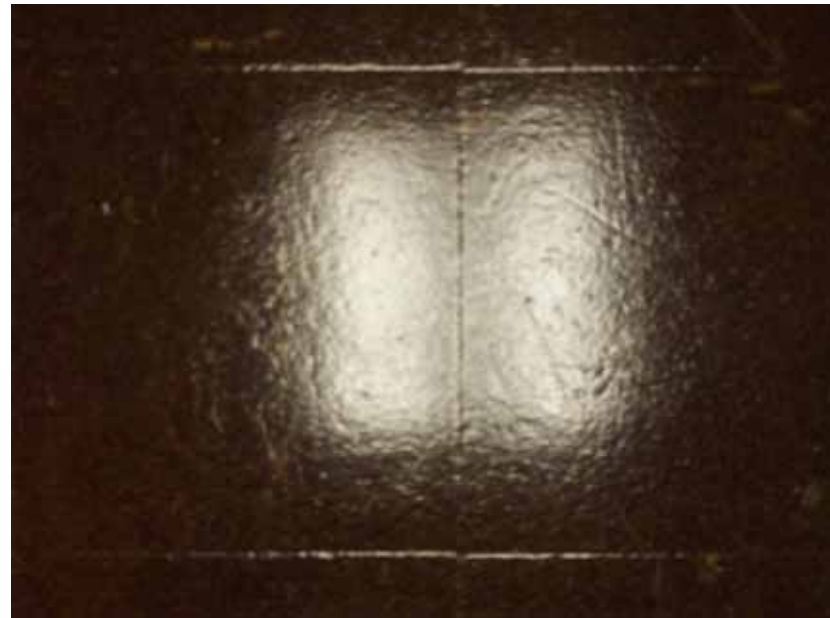
(Coated VCT requires NO stripping, waxing or buffing; ONLY dust & damp mopping;
maintenance labor, equipment, supplies & associated costs reduced 75%)



Energy Solutions

Cleaned & Coated Asbestos Tile Floor

(Coated asbestos tile is sealed & isolated;
requires NO stripping, waxing or buffing; ONLY dust & damp mopping;
[maintenance labor, equipment, supplies & associated costs reduced 75%](#))



Energy Solutions

Ceramic Tile “Before” & “After”

(Coated ceramic tile requires ONLY damp mopping with clean, clear water;
maintenance labor, equipment, supplies & associated costs reduced 65%)



Before

Energy Solutions

P.O. Box 73493 | Richmond, VA 23235 | (804) 379-8667

After

www.EnergySolutionsVA.com

e-mail: mail@EnergySolutionsVA.com

Copyright © 2008, Energy Solutions

Energy Solutions

Cleaned & Coated VCT Flooring

(Coated VCT requires NO stripping, waxing or buffing, ONLY dust & damp mopping;
maintenance labor, equipment, supplies & associated costs reduced 75%)



Energy Solutions

Cleaned & Coated Epoxy Terrazzo

(Coated terrazzo Requires NO stripping, waxing or buffing—ONLY dust & damp mopping;
[maintenance labor, equipment, supplies & associated costs reduced 75%](#))



Energy Solutions

“Before” & “After” Ceramic Tile Floor

(Coated ceramic tile requires ONLY damp mopping with clean, clear water;
maintenance labor, equipment, supplies & associated costs reduced 75%)



Before



After

Energy Solutions

Cleaned & Coated Epoxy Terrazzo

(Coated terrazzo requires NO stripping, waxing and/or buffing; ONLY dust & damp mopping;
maintenance labor, equipment, supplies & associated costs reduced 75%)



Energy Solutions

Cleaned & Coated Textured Ceramic Tile

(Coated ceramic tile requires ONLY light mopping with clean, clear water;
maintenance labor, equipment, supplies & associated costs reduced 75%)



Energy Solutions

Cleaned & Coated VCT Flooring

(Coated VCT requires NO stripping, waxing or buffing; ONLY light dust & damp mopping;
[maintenance labor, equipment, supplies & associated costs reduced 75%](#))



Energy Solutions

Cleaned & Coated Epoxy Terrazzo

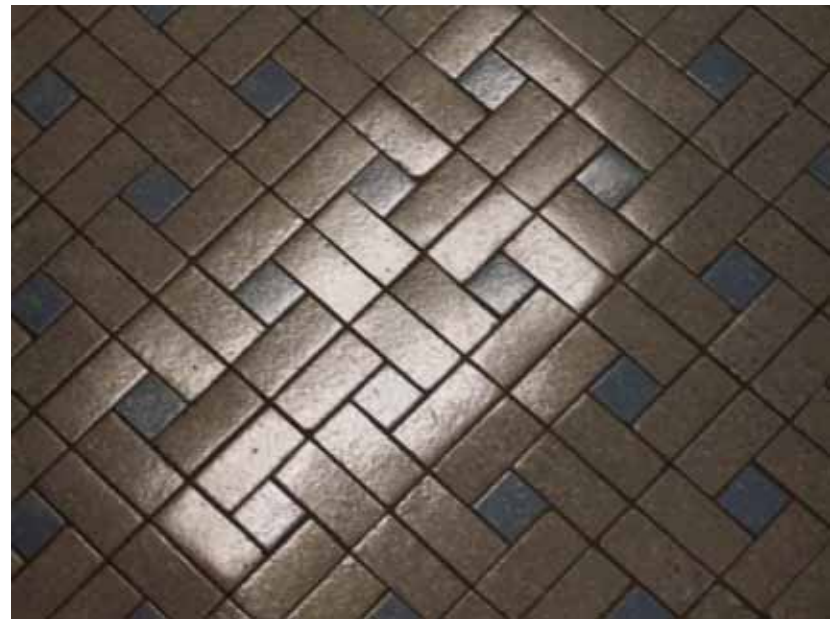
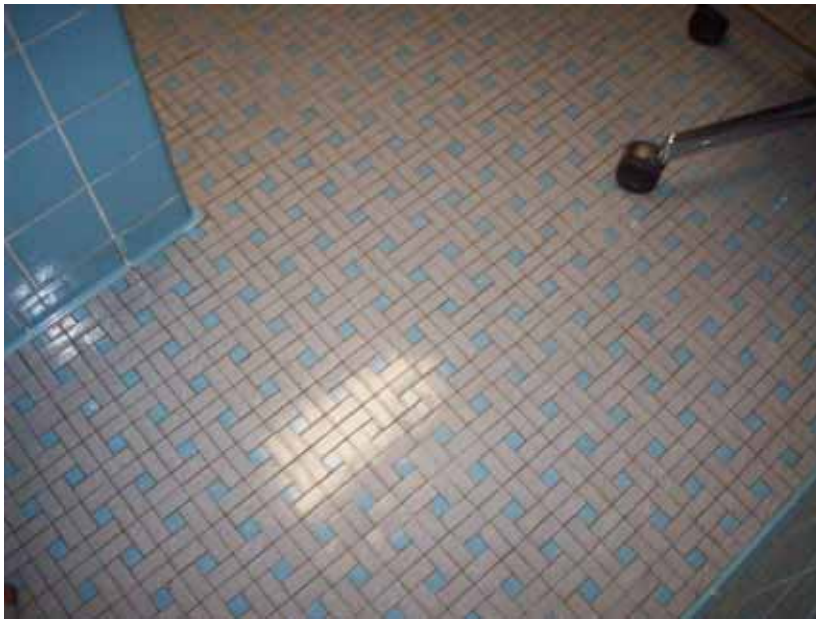
(Coated terrazzo requires NO stripping, waxing or buffing; ONLY dust & damp mopping;
[maintenance labor, equipment, supplies & associated costs reduced 75%](#))



Energy Solutions

Cleaned & Coated Ceramic Tile Floor

(Coated ceramic tile requires ONLY damp mopping with clean , clear water;
maintenance labor, equipment, supplies & associated costs reduced 75%)



Energy Solutions

Cleaned & Coated Epoxy Terrazzo Floor

(Coated terrazzo requires NO stripping, waxing or buffing; ONLY dust & damp mopping;
[maintenance labor, equipment, supplies & associated costs reduced 75%](#))



Energy Solutions

Cleaned & Coated Ceramic Tile

(Coated ceramic tile requires ONLY damp mopping with clean, clear water;
maintenance labor, equipment, supplies & associated costs reduced 75%)



Energy Solutions

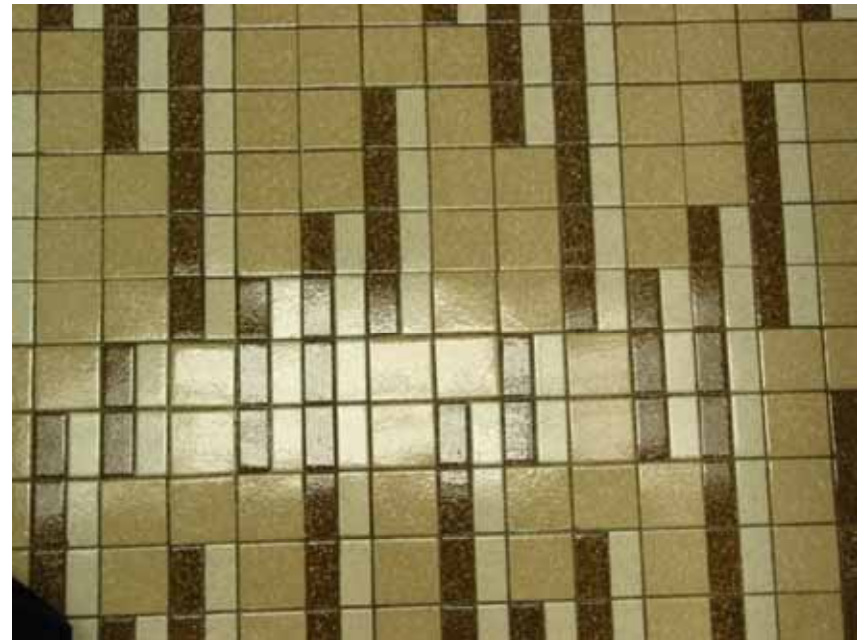
Ceramic Tile “Before” & “After”

(Coated ceramic tile requires ONLY damp mopping with clean, clear water;
maintenance labor, equipment, supplies & associated costs reduced 75%)

Before



After



Energy Solutions

Ceramic Tile “Before” & “After”

Coated ceramic tile requires ONLY damp mopping with clean, clear water; *maintenance labor, equipment, supplies & associated costs reduced*

75%



Before



After

Energy Solutions

VCT Tile “Before” & “After”

Coated VCT requires **NO** stripping, waxing or buffing; **ONLY** damp mopping with clean, clear water; *maintenance labor, equipment, supplies & associated costs reduced 75%*)



Before



After

Energy Solutions | P.O. Box 73493 | Richmond, VA 23235 | (804) 379-9067
www.EnergySolutionsVA.com | e-mail: mail@EnergySolutionsVA.com

Copyright © 2008, Energy Solutions

Energy Solutions

Mosaic Tile “Before” & “After”

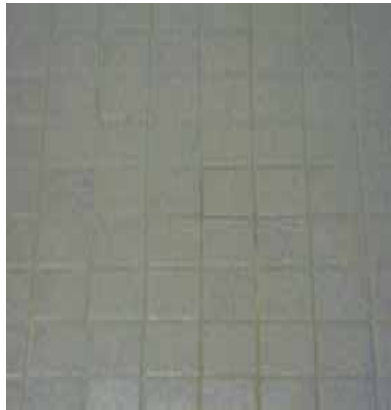
Coated mosaic tile requires ONLY damp mopping with clean, clear water; *maintenance labor, equipment, supplies & associated costs reduced 75%*)



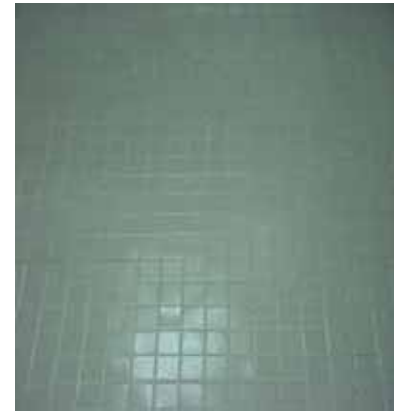
Energy Solutions

Cleaned & Coated Ceramic Tile Floor

(Coated ceramic tile requires ONLY damp mopping with clean, clear water;
maintenance Labor, equipment, supplies & associated costs reduced 75%)



Before



After

Energy Solutions | P.O. Box 73493 | Richmond, VA 23235 | (804) 379-9067
www.EnergySolutionsVA.com | e-mail: mail@EnergySolutionsVA.com

Copyright © 2008, Energy Solutions

Energy Solutions

Various Cleaned & Coated Floor Types



Glazed Tile Bathroom
Winn Dixie Distribution Center



Polished & Quarry Tile Walkway
Grand Hotel & Condo-Miami



Tinted Concrete
Grand Hotel – Pool Deck



Quarry Tile



Bathroom Floor

Miami Transit Station-Dadeland



Epoxy Terrazzo

Energy Solutions | P.O. Box 73493 | Richmond, VA 23235 | (804) 379-9067
www.EnergySolutionsVA.com | e-mail: mail@EnergySolutionsVA.com

Copyright © 2008, Energy Solutions

Energy Solutions

Cleaned & Coated Masonry Tile



Energy Solutions | P.O. Box 73493 | Richmond, VA 23235 | (804) 379-9067
www.EnergySolutionsVA.com | e-mail: mail@EnergySolutionsVA.com

Copyright © 2008, Energy Solutions

Energy Solutions

***Clean HVAC/R Coils Yield Energy
Savings of 29% - 38%!!***

***Before & After HVAC/R Cleaning &
Coating Pictures***

Energy Solutions

Clean HVAC/R Coils = BIG Energy Savings!!

The Case for Clean HVAC/R Units

According to an engineer from a major HVAC manufacturer, units are old when there is a measurable decrease in performance. In particularly corrosive environments where exposure to coastal salt or industrial pollution is highest, efficiency may drop significantly (more than 20 percent) in less than three months of operation. In less hostile environments, e.g., average urban areas, owners may see a significant drop after 6 months or more. The usual causes cited for performance degradation of this type are dust, pollutant particulates, pollen, leaves, and other debris that act as insulators against efficient heat exchange.

SDGE (San Diego Gas and Electric) HVAC performance data suggests that \square in terms of power consumption \square of a new or clean 3 ton HVAC unit will drop about 28 percent after 285 days of operation. The chart below is an extrapolation of SDGE data energy savings of new (clean) coils over old (dirty) ones.

Power Consumption Comparison *New vs Used Units*

Unit Size (tons)	New (clean) Coils Avg KWH/Day	Old (dirty) Coils Avg KWH/Day	Performance Drop
3	27	38	-28.9%
5	37	54	-31.5%
7.5	49	75	-34.7%
10	82	112	-26.8%
15	107	163	-34.4%
20	139	216	-35.6%
25	180	272	-33.8%
30	205	326	-37.1%
40	277	443	-37.5%
50	347	549	-36.8%
60	420	657	-36.1%

Source: Data extrapolated from studies done by SDGE (San Diego Gas & Electric) based upon 285 days of usage.

Energy Solutions

3 Ton A/C Unit

(Note: dirty black fin/coil area on the “Before” image and the silver/clean fins on the “After” cleaned & coated picture;

(energy savings & associated electricity cost documented at 25%)

Before



After



Energy Solutions

Before

&

After



Energy Solutions | P.O. Box 73493 | Richmond, VA 23235 | (804) 379-9067
www.EnergySolutionsVA.com | e-mail: mail@EnergySolutionsVA.com

Copyright © 2008, Energy Solutions

Energy Solutions

Before



&

After



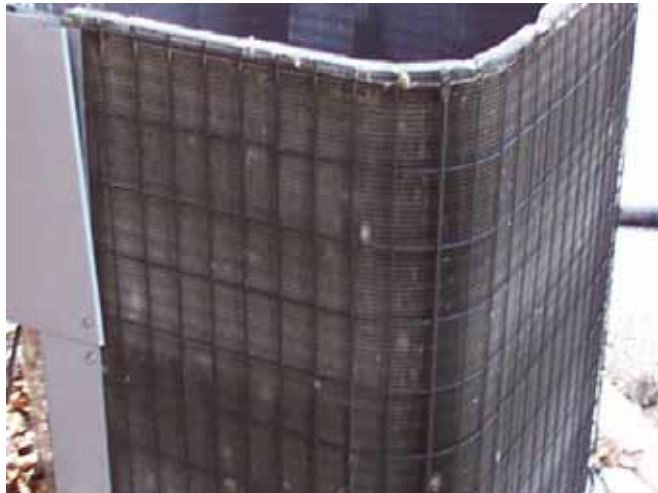
Energy Solutions | P.O. Box 73493 | Richmond, VA 23235 | (804) 379-9067
www.EnergySolutionsVA.com | e-mail: mail@EnergySolutionsVA.com

Copyright © 2008, Energy Solutions

Energy Solutions



Energy Solutions



**Before, During
& After**



Energy Solutions

Before & After



Energy Solutions

5 Ton Commercial Roof Unit

(estimated system efficiency improvement and energy & electricity cost savings projected at 30%)

Before



After



Energy Solutions

***Our Coatings resist/prevent
Graffiti***

Energy Solutions | P.O. Box 73493 | Richmond, VA 23235 | (804) 379-9067
www.EnergySolutionsVA.com | e-mail: mail@EnergySolutionsVA.com

Copyright © 2008, Energy Solutions

Energy Solutions

Graffiti-Resistant Painted Wall

Coated



Uncoated