

# *Energy Solutions*

## Representative “Before & After” *GREEN* Cleaning & Coating Pictures

Various Surface Types

# *Energy Solutions*

## **MONUMENTS & BRASS**

# Energy Solutions

## Monument & Brass

*(Entire structure cleaned & coated—brick, aggregate & brass)*

BEFORE



AFTER



# Energy Solutions

## Monument & Brass

*(Entire structure cleaned & coated—brick, aggregate & brass)*

BEFORE



AFTER



# Energy Solutions

## Brass “Before” & “After”

Coated Brass is permanently sealed—NO polishing or buffing required!  
*(maintenance labor, energy, equipment, supplies & associated costs reduced 75%)*

Before



After





# Energy Solutions

## ***Cleaned & Coated Brass Hand Rail***

Prior to coating, this brass hand railing required *daily cleaning & polishing*;  
*6 years later, it looks as it did the day it was originally coated, yet requires NO cleaning or polishing!*



# Energy Solutions

## Brass Cleaning Underway...





# *Energy Solutions*

## Various **GREEN** Hard-surface Floor Cleaning & Coating Engagements

Representative “Before” & “After” Pictures


# Energy Solutions

## Our Green Floor-Care Program/Coating Benefits

- **ELIMINATES THE COSTLY *STRIP, CLEAN & RECOAT* CYCLE REQUIRED FOR MOST FLOORS—ELIMINATES THE NEED FOR ENVIRONMENTALLY-DAMAGING CHEMICALS (STRIPPERS, WAXES, SEALANTS, ETC)**
- **TOTALLY SEALS THE FLOORS (GROUT, SURFACE, ETC) SO MOLD, MILDEW AND OTHER CONTAMINANTS CANNOT PENETRATE & COMPROMISE THE CLEANED SUBSTRATE**
- **CHEMICALLY BONDS TO THE TREATED SURFACE—WILL NOT PEEL, CRACK OR FLAKE**
- **STAIN RESISTANT TO MOST CHEMICALS, FOOD, DRINK AND OIL-BASED PRODUCTS WITHOUT AFFECTING THE PROTECTED FLOOR; EASILY CLEANED WITH MILD SOAP & WATER**
- **HIGHLY DURABLE & SLIP RESISTANT WHILE MAINTAINING THE SHINY APPEARANCE DESIRED BY MOST FACILITIES**
- **ELIMINATES THE NEED FOR HARSH, ENVIRONMENTALLY-UNSAFE CLEANERS, CHLORITES AND/OR ANTI-MICROBIAL PRODUCTS IN THE ROUTINE MAINTENANCE OF TREATED SURFACES**
- **SIGNIFICANTLY REDUCES/ELIMINATES THE GROWTH OF DISCOLORING MOLD ON MOIST SURFACE AND IN GROUT AREAS, THUS MAINTAINING THE COSMETIC APPEAL AND CLEANLINESS OF THE COATED FLOOR**
- **EASILY REPAIRED & TOUCHED-UP WHEN SCUFFED OR SCRATCHED**
- **EXTENDS THE LIFE OF THE COATED ASSET**
- **RETARDS OXIDATION, CORROSION AND UV-CAUSED SURFACE DEGRADATION**
- **RESTORES/ENHANCES THE FLOOR'S INTEGRITY AND AESTHETIC APPEARANCE**
- **REDUCES THE INVESTMENT IN TIME, ENERGY, LABOR, EQUIPMENT AND CLEANING MATERIALS NECESSARY FOR ROUTINE CLEANING & MAINTENANCE**
- **SIGNIFICANTLY REDUCES THE OVERALL COST OF FACILITY OPERATION & FLOOR MAINTENANCE**

# Energy Solutions

*A Clean and Coated Flooring System increases slip resistance by an average of 67%*

**TCA**  **PRODUCT TESTING SERVICE**  
 Tile Council of America, Inc. 100 Clemson Research Blvd. Anderson, SC 29625 Tel (864) 646-1116 Fax (864) 646-2821

TCA TEST REPORT NUMBER: TCA-200-01 PAGE: 1 OF 4

TEST REQUESTED BY: Adsil  
 Attn: Jim Gibson  
 1 Hargrove Grade  
 Suite 1K  
 Palm Coast, FL 32137


TEST SUBJECT MATERIAL: uncoated specimen

TEST DATE: 10/29/01-10/30/01

TEST PROCEDURE: ASTM C1028. "Standard Test Method for Determining the Static Coefficient of Friction of Ceramic Tile and Other Like Surfaces by the Horizontal Dynamometer Pull-Meter Method"  
 -A Chatillon DFIS 100 digital force gauge was used to measure each pull in pounds-force  
 -A 3 x 3 x 1/8 inch piece of Neolite was used as the sensor.


TEST RESULTS: The average static coefficient of friction of twelve (12) pulls was:

	As Received	After Cleaning
Dry:	0.67	0.74
Wet:	0.55	0.55

SUBMITTED BY:   
 Noah Chry  
 Laboratory Manager

Testing Services: testing@tcausa.com Technical Questions: techinfo@tcausa.com  
 This report is confidential and has been prepared for the exclusive use of the client. It is criticism of any product by TCA. This report shall not be published in any form.

An independent study by the TCA (Tile Council of America) confirms that tile coated with Adsil's floor coatings increased slip resistance up to 67%! Significant improvements were documented for both WET & DRY Flooring!!

**TCA**  **PRODUCT TESTING SERVICE**  
 Tile Council of America, Inc. 100 Clemson Research Blvd. Anderson, SC 29625 Tel (864) 646-1116 Fax (864) 646-2821

TCA TEST REPORT NUMBER: TCA-200-01 PAGE: 3 OF 4

TEST REQUESTED BY: Adsil  
 Attn: Jim Gibson  
 1 Hargrove Grade  
 Suite 1K  
 Palm Coast, FL 32137


TEST SUBJECT MATERIAL: MicroGuard™ AD701, AD702 & AD704

TEST DATE: 10/29/01-10/30/01

TEST PROCEDURE: ASTM C1028. "Standard Test Method for Determining the Static Coefficient of Friction of Ceramic Tile and Other Like Surfaces by the Horizontal Dynamometer Pull-Meter Method"  
 -A Chatillon DFIS 100 digital force gauge was used to measure each pull in pounds-force  
 -A 3 x 3 x 1/8 inch piece of Neolite was used as the sensor.

TEST RESULTS: The average static coefficient of friction of twelve (12) pulls was:

	As Received	After Cleaning
Dry:	0.84	0.81
Wet:	0.83	0.92

SUBMITTED BY:   
 Noah Chry  
 Laboratory Manager

Testing Services: testing@tcausa.com Technical Questions: techinfo@tcausa.com Web Site: www.tcausa.com  
 This report is confidential and has been prepared for the exclusive use of the client. It is not an endorsement, approval, certification, or criticism of any product by TCA. This report shall not be published in any form without the prior written consent of TCA.

Information provided by the Tile Council of America (TCA) Product Testing Service

MicroGuard™ AD703 & AD708  
 Stain and Slip Resistant Floor Treatment

The average static coefficient of friction of 12 pulls using the Dynamometer Pull-Meter Method was as follows:

	Uncoated	Coated	improvement
<b>DRY</b>			
as received	67	84	25%
after cleaning	74	81	9%
<b>Wet</b>			
as received	55	83	51%
after cleaning	55	92	67%

# Energy Solutions

## Ceramic Tile “Before” & “After”

Coated ceramic tile requires only damp mopping with clean, clear water  
(*maintenance labor, energy, equipment, supplies & associated costs reduced 75%*)

**Before**



**After**

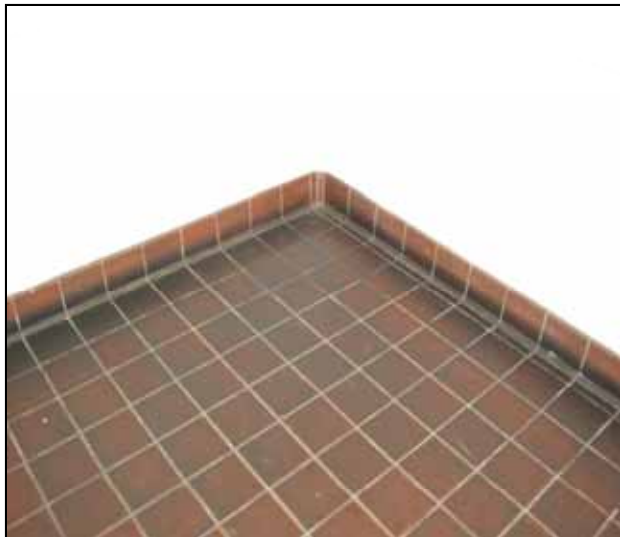


# Energy Solutions

## Quarry Tile “Before” & “After”

Coated quarry tile requires only damp mopping with clean, clear water  
(*maintenance labor, energy, equipment, supplies & associated costs reduced 75%*)

**BEFORE**



**DURING**



**AFTER**



# Energy Solutions

## Quarry Tile “Before” & “After”

Coated quarry tile requires only damp mopping with clean, clear water  
(*maintenance labor, energy, equipment, supplies & associated costs reduced 75%*)

**Before**



**After**



# Energy Solutions

## Ceramic Tile “Before” & “After”

Coated ceramic tile requires ONLY damp mopping with clean, clear water  
(*maintenance labor, energy, equipment, supplies & associated costs reduced 75%.*)

**Before**



**After**



# Energy Solutions

## Terrazzo Floor “Before” & “After”

Coated Terrazzo & BRICK require only dust & damp mopping with clean, clear water  
([maintenance labor, energy, equipment, supplies & associated costs reduced 75%](#))

Before



After





# Energy Solutions

## Quarry Tile “Before” & “After”

Coated Quarry tile requires only dust & damp mopping with clean, clear water  
(*maintenance labor, energy, equipment, supplies & associated costs reduced 75%*)

Before



After



# Energy Solutions

## Slate Floor “Before” & “After”

Coated slate requires ONLY damp mopping with clean, clear water  
(*maintenance labor, energy, equipment, supplies & associated costs reduced 75%*)

Before



After



# Energy Solutions

## Terrazzo Floor “Before” & “After”

Coated Terrazzo requires only dust & damp mopping with clean, clear water  
(*maintenance labor, energy, equipment, supplies & associated costs reduced 75%*)

Before



After



# Energy Solutions

## Asbestos Tile “Before” & “After”

Coated Asbestos is permanently sealed & requires ONLY damp mopping with clean, clear water  
([maintenance labor, equipment, supplies & associated costs reduced 75%](#))

Before



After



# Energy Solutions

## Cleaned & Coated VCT Flooring

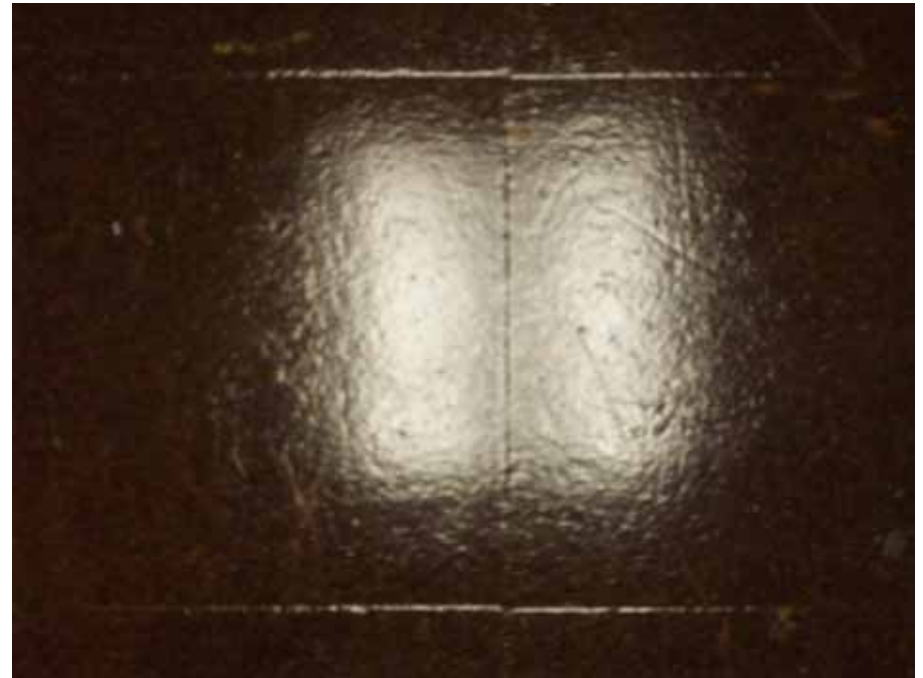
Coated VCT requires NO stripping, waxing or buffing, only dust & damp mopping  
([maintenance labor, energy, equipment, supplies & associated costs reduced 75%](#))



# Energy Solutions

## Cleaned & Coated Asbestos Tile Floor

Coated asbestos tile is permanently sealed & isolated;  
requires NO stripping, waxing or buffing, only dust & damp mopping  
([maintenance labor, energy, equipment, supplies & associated costs reduced 75%](#))



# Energy Solutions

## Ceramic Tile “Before” & “After”

Coated ceramic tile requires only damp mopping with clean, clear water;  
(*maintenance labor, energy, equipment, supplies & associated costs reduced 65%*)

**Before**



**After**



**Energy Solutions** | P.O. Box 73493 | Richmond, VA 23235 | (804) 379-9067  
[www.EnergySolutionsVA.com](http://www.EnergySolutionsVA.com) | e-mail: [mail@EnergySolutionsVA.com](mailto:mail@EnergySolutionsVA.com)

Copyright © 2008, Energy Solutions

# Energy Solutions

## Cleaned & Coated Slate Floor

Coated slate requires only damp mopping with clean, clear water  
([maintenance labor, energy, equipment, supplies & associated costs reduced 75%](#))





# Energy Solutions

## Cleaned & Coated Epoxy Terrazzo

Coated terrazzo Requires NO stripping, waxing or buffing—only dust & damp mopping  
([maintenance labor, emergy, equipment, supplies & associated costs reduced 75%](#))



# Energy Solutions

## Ceramic Tile “Before” & “After”

Coated ceramic tile requires only damp mopping with clean, clear water  
([maintenance labor, energy, equipment, supplies & associated costs reduced 75%](#))

Before



After



# Energy Solutions

## Cleaned & Coated Epoxy Terrazzo

Coated terrazzo requires NO stripping, waxing and/or buffing; only dust & damp mopping  
([maintenance labor, energy, equipment, supplies & associated costs reduced 75%](#))



# Energy Solutions

## Cleaned & Coated Textured Ceramic Tile

Coated ceramic tile requires only light mopping with clean, clear water  
(*maintenance labor, energy, equipment, supplies & associated costs reduced 75%*)



# Energy Solutions

## Cleaned & Coated VCT Flooring

Coated VCT requires NO stripping, waxing or buffing, only light dust & damp mopping  
(*maintenance labor, energy, equipment, supplies & associated costs reduced 75%.*)



# Energy Solutions

## Cleaned & Coated Epoxy Terrazzo

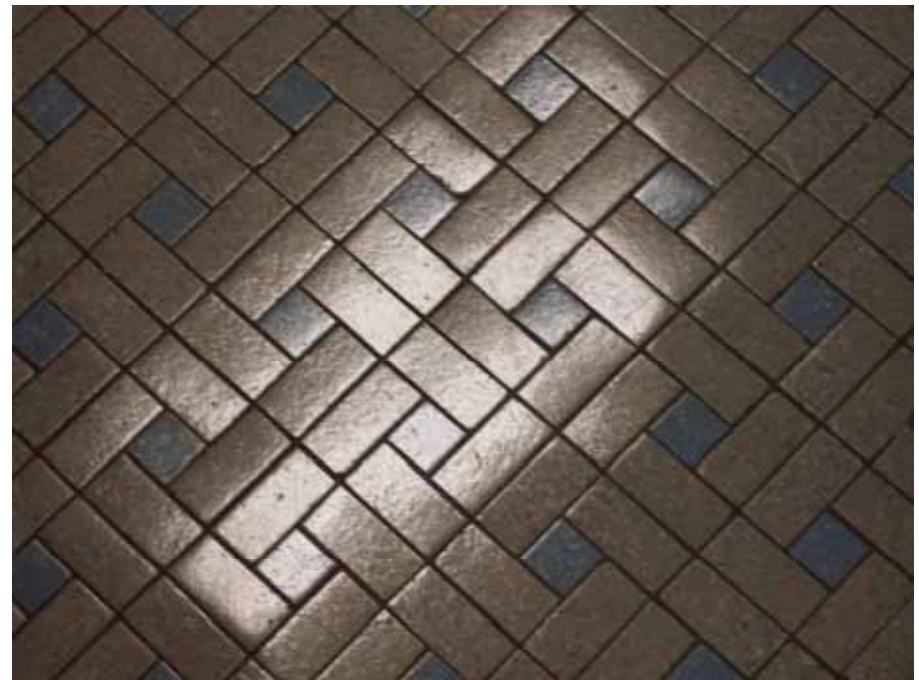
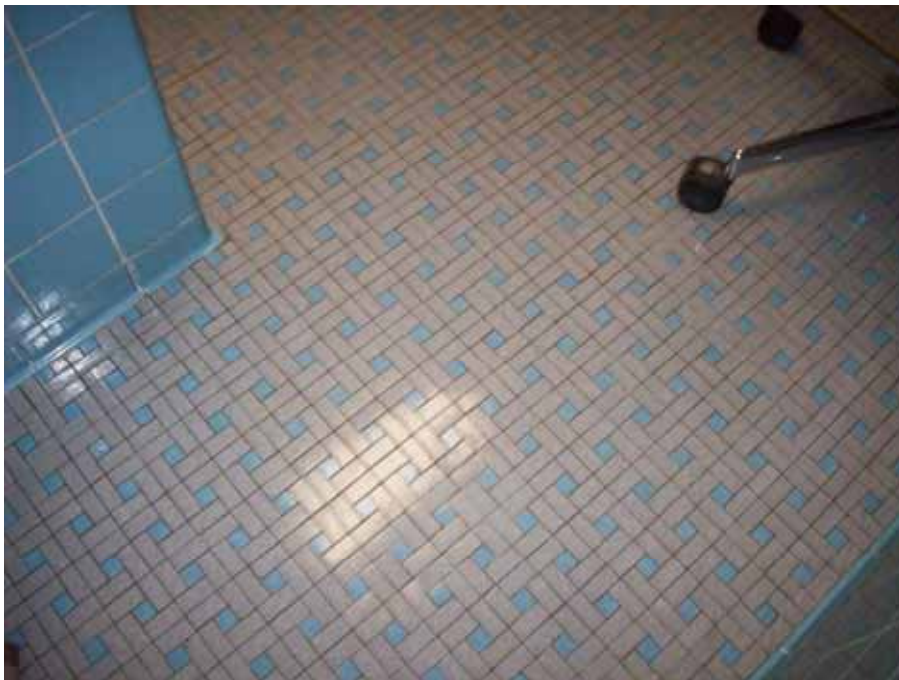
Coated terrazzo requires NO stripping, waxing or buffing, only dust & damp mopping;  
([maintenance labor, energy, equipment, supplies & associated costs reduced 75%](#))



# Energy Solutions

## Cleaned & Coated Ceramic Tile Floor

Coated ceramic tile requires only damp mopping with clean , clear water  
(*maintenance labor, energy, equipment, supplies & associated costs reduced 75%*)



# Energy Solutions

## Ceramic Tile Customer Demo

Coated ceramic tile requires only damp mopping with clean, clear water;  
([maintenance labor, energy, equipment, supplies & associated costs reduced 75%](#))



**Energy Solutions** | P.O. Box 73493 | Richmond, VA 23235 | (804) 379-9067  
[www.EnergySolutionsVA.com](http://www.EnergySolutionsVA.com) | e-mail: [mail@EnergySolutionsVA.com](mailto:mail@EnergySolutionsVA.com)

Copyright © 2008, Energy Solutions



# Energy Solutions

## Cleaned & Coated Epoxy Terrazzo Floor

Coated terrazzo requires NO stripping, waxing or buffing, only dust & damp mopping  
([maintenance labor, energy, equipment, supplies & associated costs reduced 75%](#))



# Energy Solutions

## Cleaned & Coated Ceramic Tile

Coated ceramic tile requires only damp mopping with clean, clear water  
(maintenance labor, energy, equipment, supplies & associated costs reduced 75%)



# Energy Solutions

## Ceramic Tile “Before” & “After”

Coated ceramic tile requires only damp mopping with clean, clear water  
(*maintenance labor, energy, equipment, supplies & associated costs reduced 75%*)

Before



After



# Energy Solutions

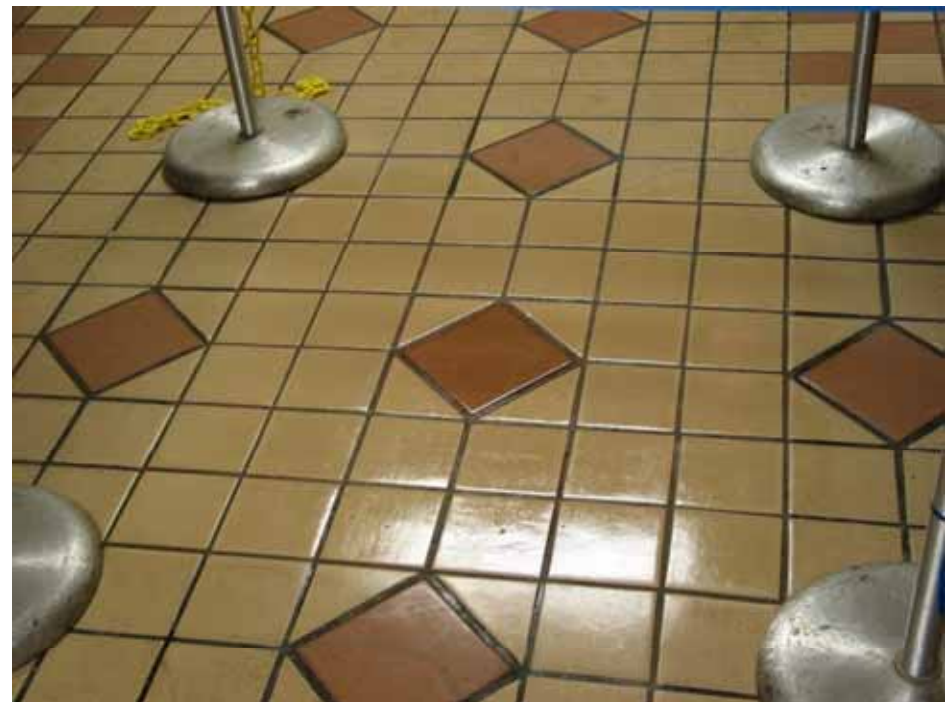
## Ceramic Tile “Before” & “After”

Coated ceramic tile Requires only damp mopping with clean, clear water  
(*maintenance labor, energy, equipment, supplies & associated costs reduced 75%*)

**Before**



**After**



# Energy Solutions

## Ceramic Tile “Before” & “After”

Coated Ceramic Tile requires only dust & damp mopping with clean, clear water  
(*maintenance labor, energy, equipment, supplies & associated costs reduced 75%*)

Before



After



# Energy Solutions

## Quarry Tile “Before” & “After”

Coated Quarry Tile requires only dust & damp mopping with clean, clear water  
(*maintenance labor, energy, equipment, supplies & associated costs reduced 75%*)

**Before**



**After**



# Energy Solutions

## Terrazzo “Before” & “After”

Coated Terrazzo requires only dust & damp mopping with clean, clear water  
(maintenance labor, energy, equipment, supplies & associated costs reduced 75%)

Before



After



# Energy Solutions

## Ceramic Tile “Before” & “After”

Coated ceramic tile Requires only damp mopping with clean, clear water ([maintenance labor, energy, equipment, supplies & associated costs reduced 75%](#))

Before



After





# Energy Solutions

## Terrazzo Floor “Before” & “After”

Coated Terrazzo requires only damp mopping with clean, clear water  
(*maintenance labor, energy, equipment, supplies & associated costs reduced 75%*)

Before



After



# Energy Solutions

## Terrazzo Floor “Before” & “After”

Coated Terrazzo requires only dust & damp mopping with clean, clear water  
(*maintenance labor, energy, equipment, supplies & associated costs reduced 75%*)

Before



After



# Energy Solutions

## VCT “Before” & “After”

Coated VCT requires only dust & damp mopping with clean, clear water  
(*maintenance labor, energy, equipment, supplies & associated costs reduced 70%*)

Before



After



# Energy Solutions

## Quarry Tile “Before” & “After”

Coated Quarry Tile requires only dust & damp mopping with clean, clear water  
(*maintenance labor, energy, equipment, supplies & associated costs reduced 75%*)

**Before**



**After**



# Energy Solutions

## Terrazzo Floor “Before” & “After”

Coated Terrazzo requires only dust & damp mopping with clean, clear water  
(*maintenance labor, energy, equipment, supplies & associated costs reduced 75%*)

Before



After



# Energy Solutions

## VCT Tile “Before” & “After”

Coated VCT requires NO stripping, waxing or buffing, only damp mopping with clean, clear water  
(maintenance labor, energy, equipment, supplies & associated costs reduced 75%)



Before



After

**Energy Solutions** | P.O. Box 73493 | Richmond, VA 23235 | (804) 379-9067  
[www.EnergySolutionsVA.com](http://www.EnergySolutionsVA.com) | e-mail: [mail@EnergySolutionsVA.com](mailto:mail@EnergySolutionsVA.com)

Copyright © 2008, Energy Solutions

# Energy Solutions

## Mosaic Tile “Before” & “After”

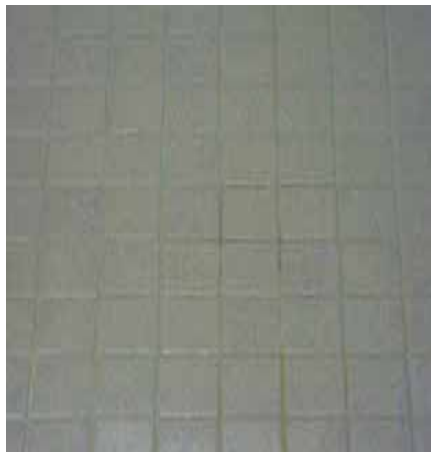
Coated mosaic tile Requires only damp mopping with clean, clear water  
(*maintenance labor, energy, equipment, supplies & associated costs reduced 75%*)



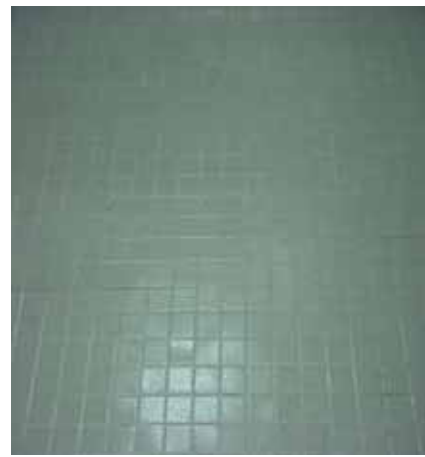
# Energy Solutions

## Cleaned & Coated Ceramic Tile Floor

Coated ceramic tile requires only damp mopping with clean, clear water  
(*maintenance Labor, energy, equipment, supplies & associated costs reduced 75%*)



**Before**



**After**



# Energy Solutions

## Various Cleaned & Coated Floor Types



**Glazed Tile Bathroom**  
*Winn Dixie Distribution Center*



**Polished & Quarry Tile Walkway**  
*Grand Hotel & Condo-Miami*



**Tinted Concrete**  
*Grand Hotel – Pool Deck*



**Quarry Tile**



**Bathroom Floor**

*Miami Transit Station-Dadeland*



**Epoxy Terrazzo**

**Energy Solutions** | P.O. Box 73493 | Richmond, VA 23235 | (804) 379-9067  
[www.EnergySolutionsVA.com](http://www.EnergySolutionsVA.com) | e-mail: [mail@EnergySolutionsVA.com](mailto:mail@EnergySolutionsVA.com)

Copyright © 2008, Energy Solutions

# Energy Solutions

## Cleaned & Coated Masonry Tile

